

Raymond White
Director
Planning and Zoning
Department



Matthew Williams
Deputy Director
Planning and Zoning
Department

TO: Planning Commission

FROM: Planning and Zoning Department

SUBJECT: TMOD-23-001

ADDRESS: City-Wide

MEETING DATE: June 6, 2023

Summary: The intent of the Gravel Parking Text Amendment, TMOD-23-001, is to provide guidelines, requirements and improve the appearance of parking lots.

STAFF RECOMMENDATION: APPROVAL



FACTS & ISSUES

- There are approximately twelve (12) current Trucking Parking Lots within the City of Stonecrest
- The current Zoning Ordinance classifies Trucking Parking as Truck Stops.
- The staff is proposing a change to the Zoning Ordinance, Chapter 27

Attachment(s) Included:

- **Revisions to the Zoning Ordinance regarding Trucking Parking/Terminal**
- **Existing trucking parking within the City of Stonecrest**



TMOD-23-001

STONECREST ZONING ORDINANCE UPDATE

Revision to the Zoning Ordinance, Chapter 27

Sec. 4.2.54. – Truck Stop and Truck Terminal

The following provisions apply to truck stops **and truck terminals** whether designed as a primary use or accessory use as part of an industrial development:

- A. Truck stops **and truck terminals** shall be permitted only on parcels of ten acres or more.
- B. Entrance drives for truck stops **and truck terminal** facilities shall not be closer than 300 feet from any point of an interstate highway interchange.
- C. Truck stops **and truck terminals** shall meet all state and federal environmental guidelines and requirements.
- D. Minimum office space of twenty (20) percent of the total non-repair-use structures.**
- E. Structures shall be consisted of face brick, granite, stone, marble, terrazzo, architecturally treated reinforced concrete slabs, either fluted or with exposed aggregate, insulated window wall panels or stainless steel, porcelain-treated steel, anodized or other permanently finished aluminum.**
- F. Truck courts, trucks, and trailers must be located behind a fence or masonry wall no less than eight (8) feet in height. The fence may not encroach into the front yard area past the front edge of the building. In addition, trucks and trailers must be parked in an orderly fashion and on surfaces paved with asphalt or concrete.**
- G. Each site shall have a landscape buffer of fifty (50) feet in width along any right-of-way.**
- H. Any truck repair must be performed inside an enclosed building.**
- I. Permissible in M (Light Industrial) and M2 (Heavy Industrial) Zoning Districts only.**
- J. Drainage: Parking areas must be constructed to allow proper drainage which shall be subject to the review and approval of the Department of Planning and Zoning.**
- K. Striping: To facilitate movement and to help maintain an orderly parking arrangement, all parking spaces shall be clearly striped with paint.**



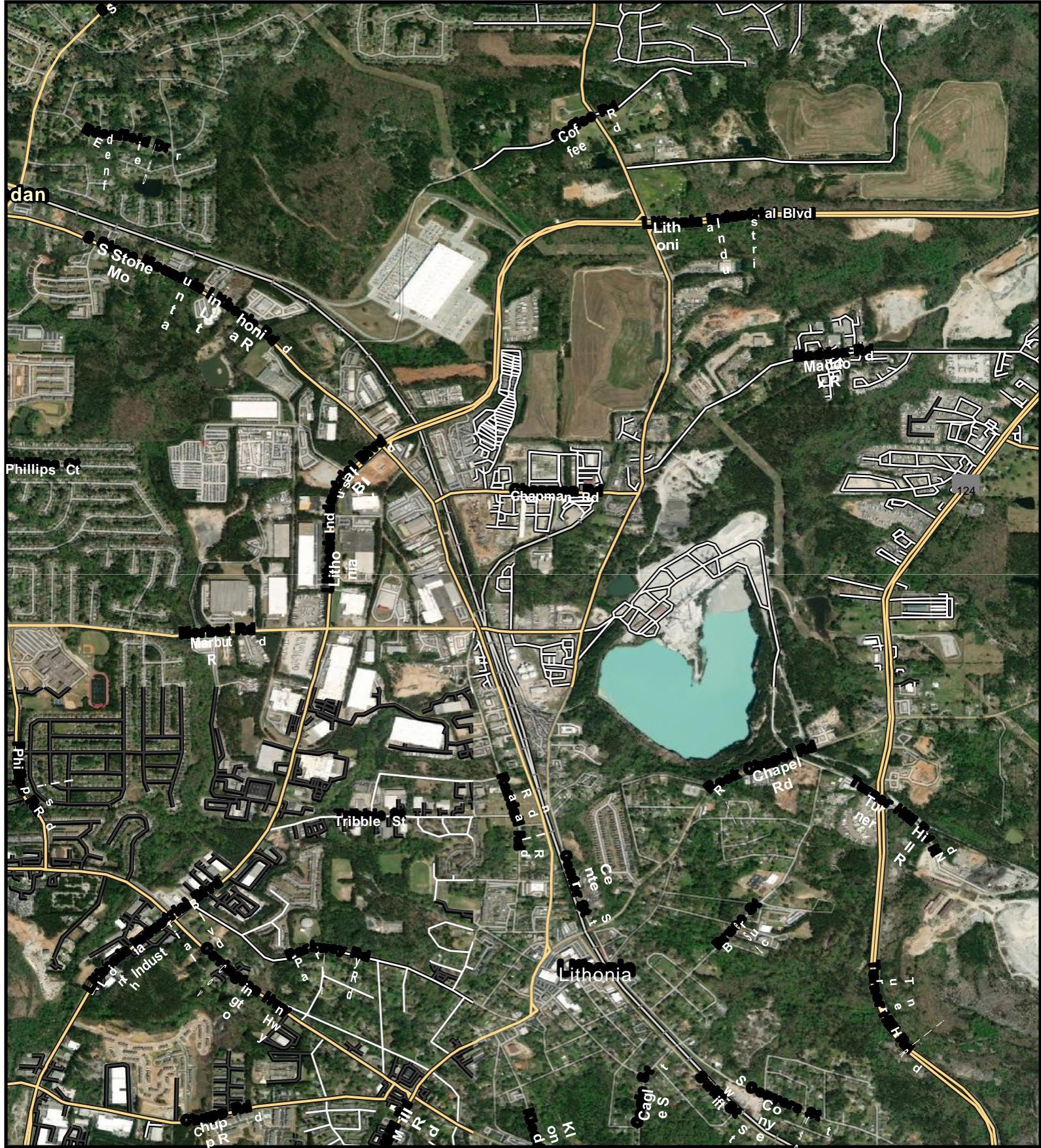
TMOD-23-001

Planning & Zoning
Department

Sec. 9.1.3. – Define terms.

Truck stop means any building, premises, or land in which or upon which a business, service, or industry involving the maintenance, servicing, storage, or repair of commercial vehicles is conducted or rendered, including the dispensing of motor fuel or other petroleum products directly into such commercial vehicles and the sale of accessories or equipment for trucks and similar commercial vehicles. A truck stop may also include overnight accommodations and restaurant facilities primarily for the use of truck crews.

Truck terminal means an area and building where vehicles load and unload cargo and freight and where the cargo and freight may be broken down or aggregated into smaller or larger loads for transfer to other vehicles or modes of transportation.



Current Gravel Parking Lot Locations

